



Augmented Reality

Powered by
AI & Machine Learning

The OnPoint AR-AI Technology Platform is engineered to deliver industry-leading surgical guidance accuracy, enabling a new standard of precision in spine and orthopedic procedures.

Precision that Adapts to You

Who is OnPoint Surgical?

OnPoint is transforming patient care through innovative surgical navigation technologies—making complex procedures more accurate, reproducible, and accessible for surgeons and patients.

OnPoint Value



Accuracy

High-precision navigation designed for reproducible execution.



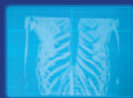
Versatility

Designed to work with existing implants, scanners, and OR tool-chains.



Economics

Navigation value without seven-figure robotics spend or vendor lock-in.



Today surgeons operate looking at a screen not the patient



Surgeons are now able to look at the patient through the OnPoint AR headset

- Keep eyes on the patient, greatly improving accuracy
- Visualize key anatomical landmarks
- Plan cases in real time
- Visualize implants directly on patient before deciding on size & location
- Preserve tactile senses – key advantage over spine robotics
- Use any implant – open platform

Precision that Adapts to You

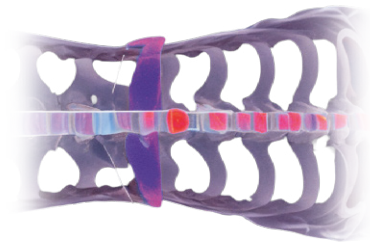
Augmented Reality & Generative AI: OnPoint AR-AI



Augmented Reality (AR)

Technology that superimposes a computer-generated image on a user's view of the real world

- 4K Image
- 60hz Refresh Rate – eliminates any lag/latency



AI & Machine Learning

Automated surgical planning & enhanced 3D anatomical visualizations for spinal surgery

Company Vision

Pioneer Augmented Reality (AR) and AI & Machine Learning

In surgery to improve patient outcomes through:

- Intuitive guidance
- Improved hand-eye coordination
- Superior accuracy
- Significant reduction in radiation exposure
- Pair AR with Artificial Neural Networks for enhanced 3D visualizations

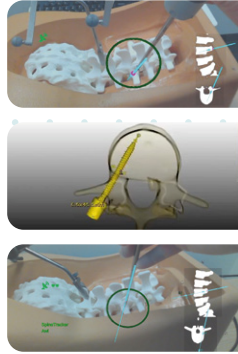


System Configuration

- ▶ **Optical Head Mounted Displays (OHMD)**
 - Primary surgeon + resident/fellow, PA
 - Completely customizable (lenses, loops, headlight)
 - OnPoint OHMD: 4k resolution, 60° FOV, 3.5oz
- ▶ **Registration**
 - Navigation system w. infrared camera, tracking arrays
- ▶ **Server & computer monitor**
 - User interface for surgeon, e.g. review surgical plan
- ▶ **Wireless access point**
 - Independent wireless network
 - Operates multiple OHMDs
- ▶ **Cart**
 - One small cart w. monitor, server, charging station

Workflow Options

- 1. Real-time display of tracked instruments without planning**
Like navigation systems, with AR display on the physical patient
- 2. Pre-operative planning on computer monitor**
Precision surgical planning for implants
- 3. Intra-operative planning “on the fly”**
Make changes efficiently to adapt to patient anatomy (rapid registration)



Registration of Pre-Operative CT Scan

✓ No need for intra-operative 3D imaging (e.g. 3D C-arm or O-arm)

- Capital savings \$450 – 800k
- Reduces radiation exposure
- Saves up to 20-30 min per scan
- Especially effective for multi-level fusion, long constructs – can help avoid 2 - 3 intra-operative scans
- Avoids imaging-related bottlenecks in the OR

Compelling Benefits

Hospital

- **Increase in Procedural Volume & Revenue**
 - Compared to robotics, significant reductions in OR & turnover time
 - Opportunity for more revenue generation – procedural expansion
- **Significant Cost Savings**
 - Eliminate capital expense (~\$1M in savings)
 - Better implant pricing, avoiding vendor “lock in”
 - Utilize existing scanners (3D C-arm, O-arm)
- **Marketing Opportunity**
 - Advertise “AR/AI” driven Navigation platform
 - Best in class technology for the hospital’s Spine program

Surgeon & Patient

- **Single most accurate surgical guidance system***
 - Enhanced patient safety, potential for superior patient outcomes
 - Less variability
 - Decrease radiation exposure – Surgeon & Staff
 - Respects surgeon specific preferences
 - Safely adopt new surgical approaches with accuracy

* These benefits are enhanced by unprecedented accuracy, exceeding that of all major existing navigation, robotic and augmented reality systems between 2 - 5x, with the differences being statistically highly significant across all comparisons in peer reviewed cadaveric studies.





Precision that Adapts to You



onpointsurgical.com

